



4/101 Ramsgate Avenue Bondi Beach NSW

1  1 

Live the dream Bondi lifestyle at this sun drenched one bedroom apartment situated footsteps from the ocean on Ben Buckler headland.

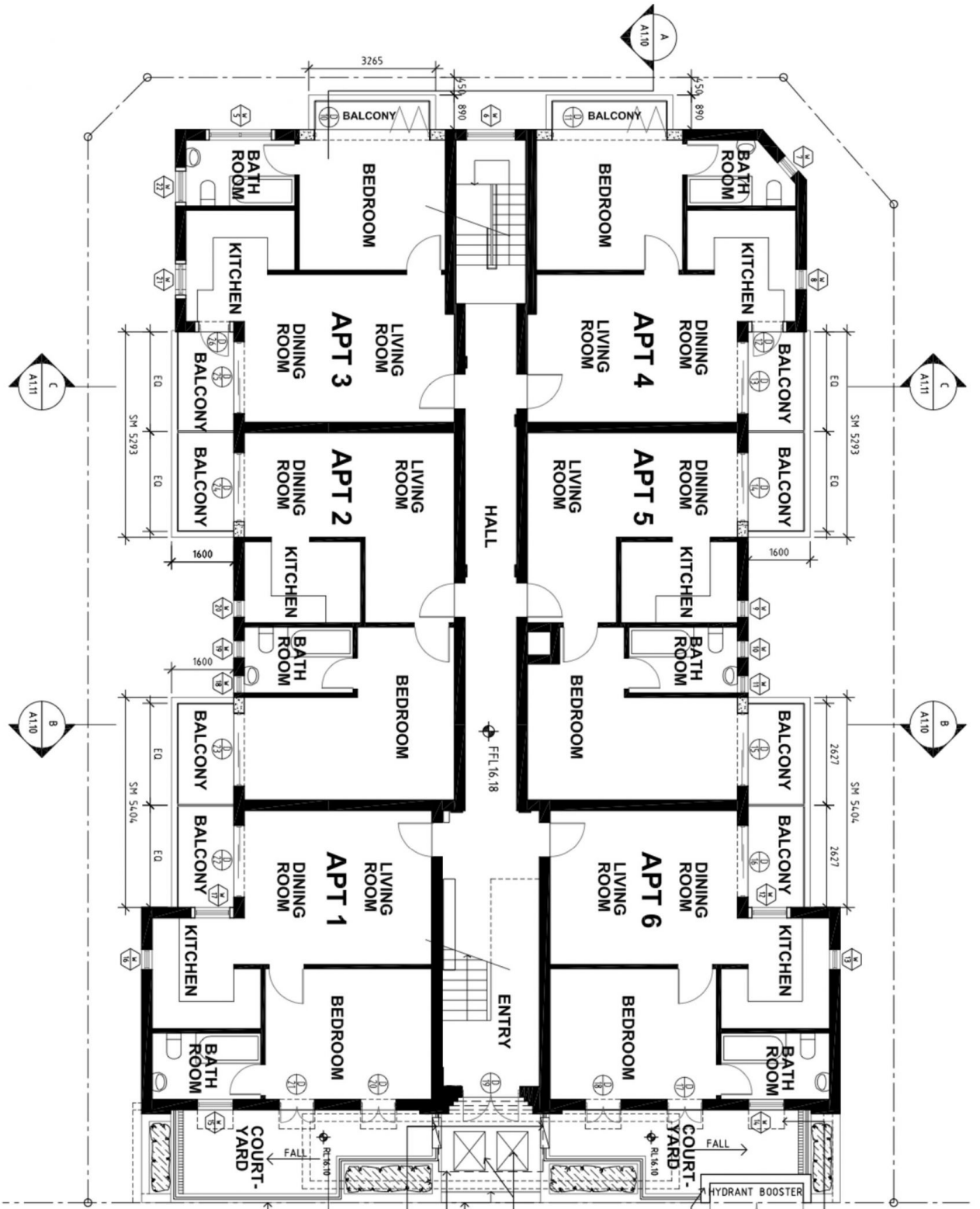
Extensive building refurbishment and renovation in an classic Art Deco building set in a blue-chip position just 50 metres to clifftop parklands .

A must to inspect!

This apartment features;

- Freshly painted
- New oak floorboards
- Two balconies
- New doors and windows
- Mirrored built in robes
- Renovated kitchen with new smeg stainless steel appliances
- Modern bathroom

View : <https://www.rwbb.com.au/lease/nsw/eastern-suburbs/bondi-beach/residential/unit/7832567>



RAMSGATE AVENUE



- HYDRANT BOOSTER ENCLOSURE (MIN. 500mm DEEP x MIN. 2400mm LONG x MIN. 975mm HIGH INTERNALLY) WITH 2m HIGH CONCRETE BLOCK SHIELD WALL BEHIND, TO SIDES AND FRONT. ENCLOSURE TO HAVE LID AND ALUMINIUM TIMBER-LOOK BATTERED SWING GATES WITH FIRE BRIGADE COMPLIANT HARDWARE.
- ACCESS LIDS TO CONCRETE HYDRANT BOOSTER TANK BELOW
- 2 NEW STEPS
- LINE OF AWNING ABOVE ENTRY
- LETTER BOXES IN ENCLOSURE AS SPECIFIED
- CEMENT RENDERED CONCRETE BLOCKWORK WALL WITH FENCING OVER AS SPECIFIED.

NO.	DATE	DETAILS
C	M/A/2017	C/TECHER
B	M/6/2016	DA REVISION
A	M/12/2015	DEVELOPMENT APPLICATION
		REVISIONS

Level 8 745 Clarence Street SYDNEY 2000 P 41 2 924 5205 F 61 2 924 998
 PO Box 0291 Queen Victoria Building 1230 Egnat@gnat.com.au
 Gnat Pty Ltd 488 St 001 299 407
 Gnat Architects 488 St 001 299 407
 Gnat Architects
 488 St 001 299 407
 488 St 001 299 407
 488 St 001 299 407

GILES TRIBE ARCHITECTS
 ARCHITECTS & URBAN PLANNERS

Project: **ALTERATIONS AND ADDITIONS**
101 RAMSGATE AVENUE
BONDI

Scale: 1:100 @ A3
 Date: 09/01/2017
 Drawn: MS

Drawing: **GROUND FLOOR PLAN**
 Drawing No: **A3.05C**

This drawing is copyright and must not be retained, copied or used without the consent of Giles Tribe Architects.