

8/4 Wellington Street Woollahra NSW

2 1 1

Embracing a sunny north facing position in the 'Wellesley' complex, this private double brick apartment promises an easycare lifestyle of comfort and convenience. The 62sqm layout offers open living and dining zones, a streamlined stone kitchen with Miele appliances, plus two good sized bedrooms fitted with built-in robes. This apartment is a great opportunity for owner-occupiers or astute investors looking to capitalise. Set across from Chiswick Gardens, it's footsteps to buses, 350 metres from Queen Street shops and only 1 kilometre from Edgecliff Centre.

View : <https://www.rwbb.com.au/sale/nsw/eastern-suburbs/woollahra/residential/apartment/7781334>



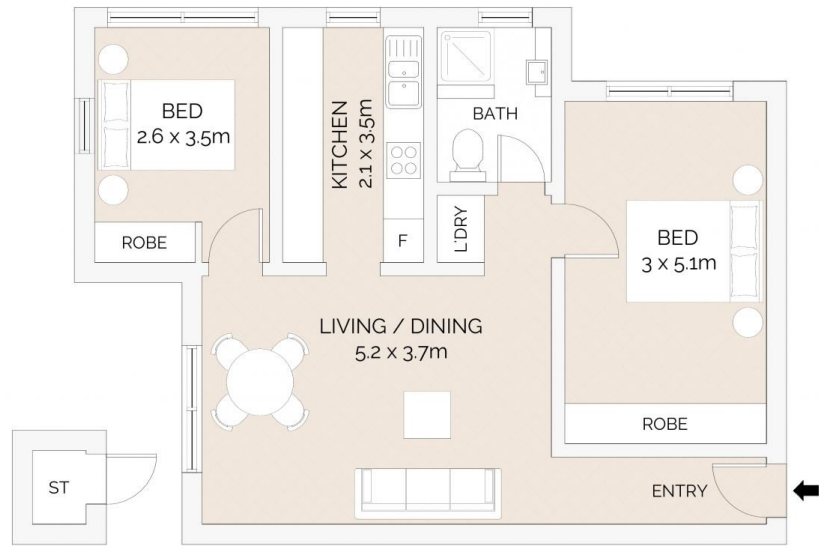
Ian Wallace
02 8362 4000



Karen Hendry
02 8362 4000

- ? 2 bedrooms, 1 bathroom, LUG
- ? Welcoming interiors reveal high ceilings
- ? Original timber floorboards throughout
- ? Gas kitchen offers integrated appliances
- ? Fully tiled bathroom, frameless shower
- ? Storage, internal laundry, gas heating

8/4 Wellington Street, Woollahra



0 1 2 3 4 5

Scale in metres. Indicative only. Dimensions are approximate. All information contained herein is gathered from sources we believe to be reliable. However we cannot guarantee its accuracy and interested persons should rely on their own enquiries.

